

HERDERS - FARMERS APP

Connecting Herders and Farmers for Peaceful Coexistence

The **Herders-Farmers app** provides an innovative digital solution that helps nomadic herders and farmers access safe, geo-fenced farmlands with available grazing areas for livestock. By leveraging suggested dedicated transhumance (herders) routes, the app promotes cooperation, reduces conflicts, and supports sustainable land use.



WHO WE ARE

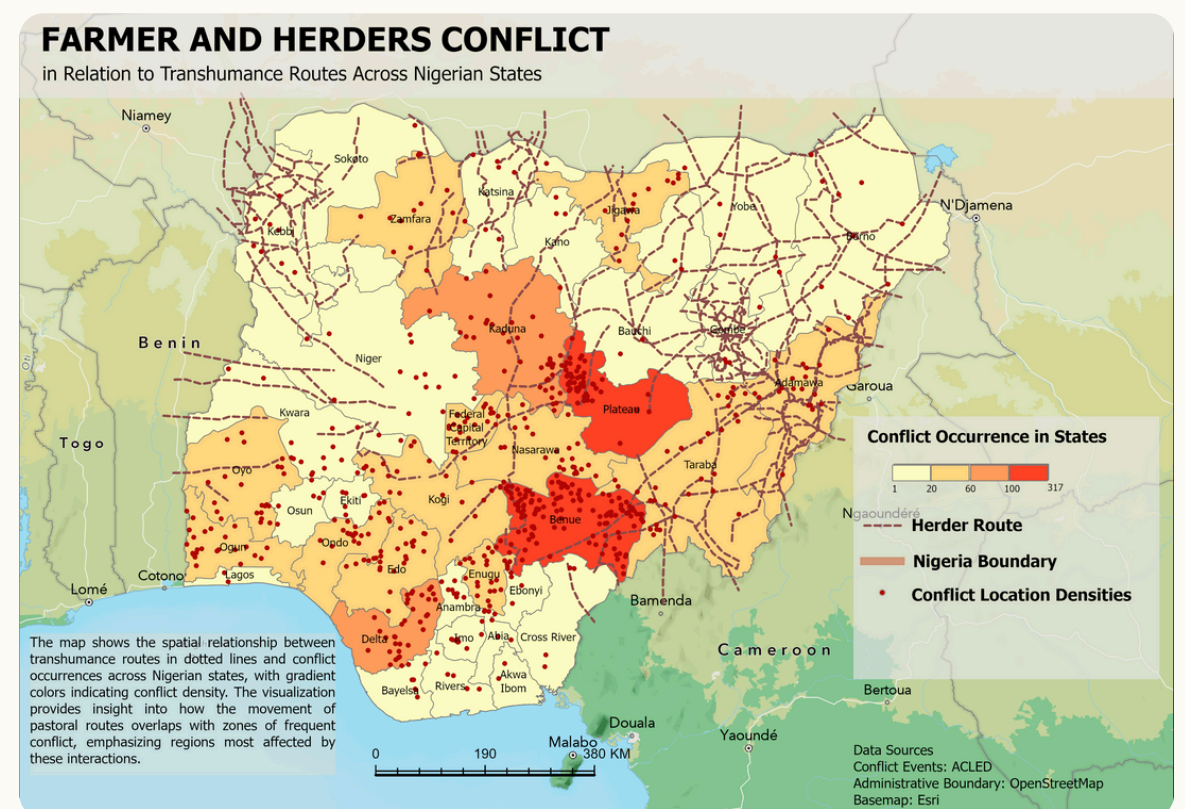
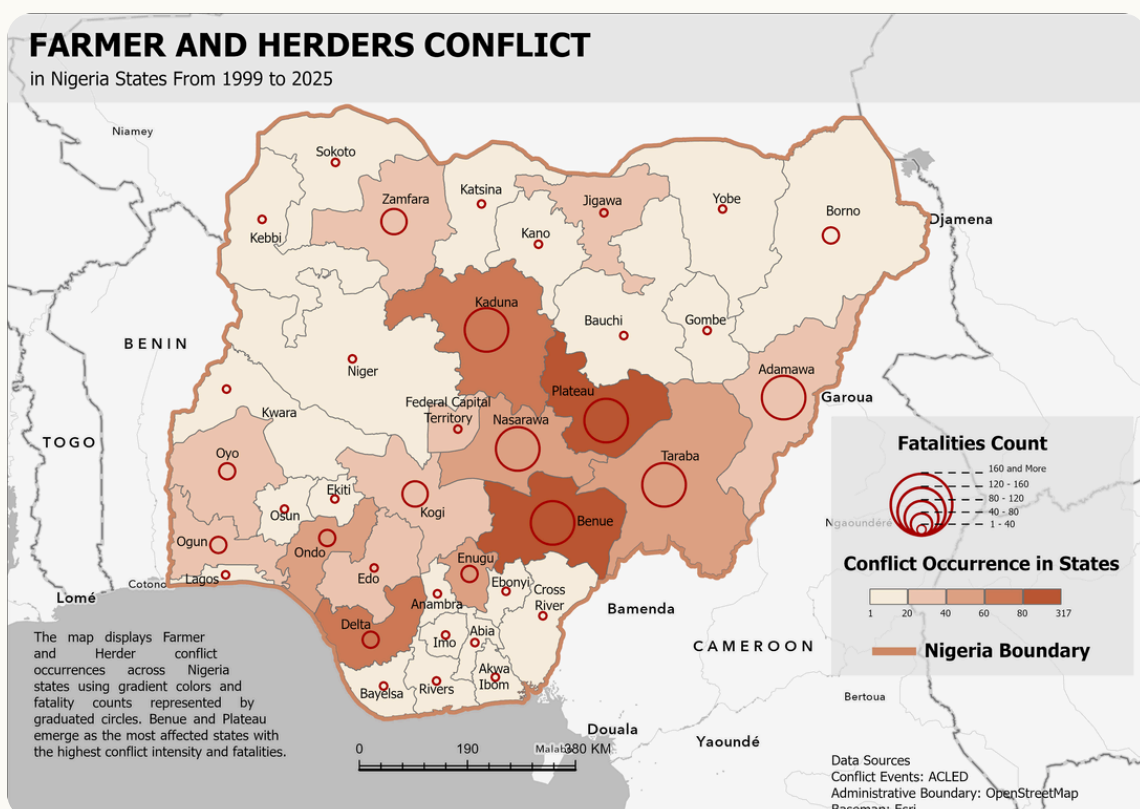
PeaceEye provides decision-makers with timely, location-specific risk intelligence to navigate volatile environments with confidence. Our tailored insights support proactive risk mitigation, smarter interventions, and better outcomes in high-risk environments.

Problem Statement

Herders-Farmers Conflict in Nigeria

The herder-farmer conflict is a major and growing challenge across many parts of sub-saharan Africa. Its impact is especially pronounced in Nigeria, where the situation has become severe in recent times as climate change alters land productivity, water availability, and migration patterns.

The conflict has steadily escalated from 1999 through 2025 (ACLED). The number of conflict events rises sharply over this period, reflecting mounting pressure on land and natural resources. Expanding farmland and infrastructure, shrinking grazing corridors, population growth, and widespread environmental degradation have all contributed to this steep upward trend.



The map above shows the spread of farmer-herder conflicts across Nigeria, with Benue, Plateau, and Kaduna recording the highest incidents. These states in the Middle belt region are key agricultural hubs, where most livelihoods depend on farming, with Benue known as the nation's "food basket," making the region especially prone to resource-related tensions.

Overlaying the map with the transhumance routes above, we see that these states lie directly along major pastoral corridors, where migrating herders frequently and seasonally pass through heavily farmed, high-population agricultural zones. In contrast, northern and northeastern states with more defined, uninterrupted pastoral routes see noticeably fewer conflict hotspots.



Solutions

To address these problems, we introduce **The Herders-Farmers app**, a flagship project in Nigeria designed to promote peacebuilding, sustainable land use, and conflict prevention. The app integrates local stakeholder participation to ensure its solutions align with community needs and on-the-ground conditions. The Herders-Farmers App introduces three key features that aims to support nomadic herders and farmers in accessing safe grazeland.

Temporary Grazeland Availability allows herders to locate approved grazing areas on registered farms, while farmers can list available land, set conditions, and manage access.

Geo-fenced Farmlands digitize and map all registered farms, creating virtual boundaries that improve land visibility and monitoring.

Suggested Transhumance Routes provide optimized travel paths from north to south, based on traditional routes but adjusted to avoid populated and high-risk areas, promoting safer livestock movement and minimizing community disruption.



-  Temporary Grazeland Availability
-  Geo-fenced farmlands
-  Suggested Transhumance routes

HOW THE APP WORKS

Temporary Grazeland Availability

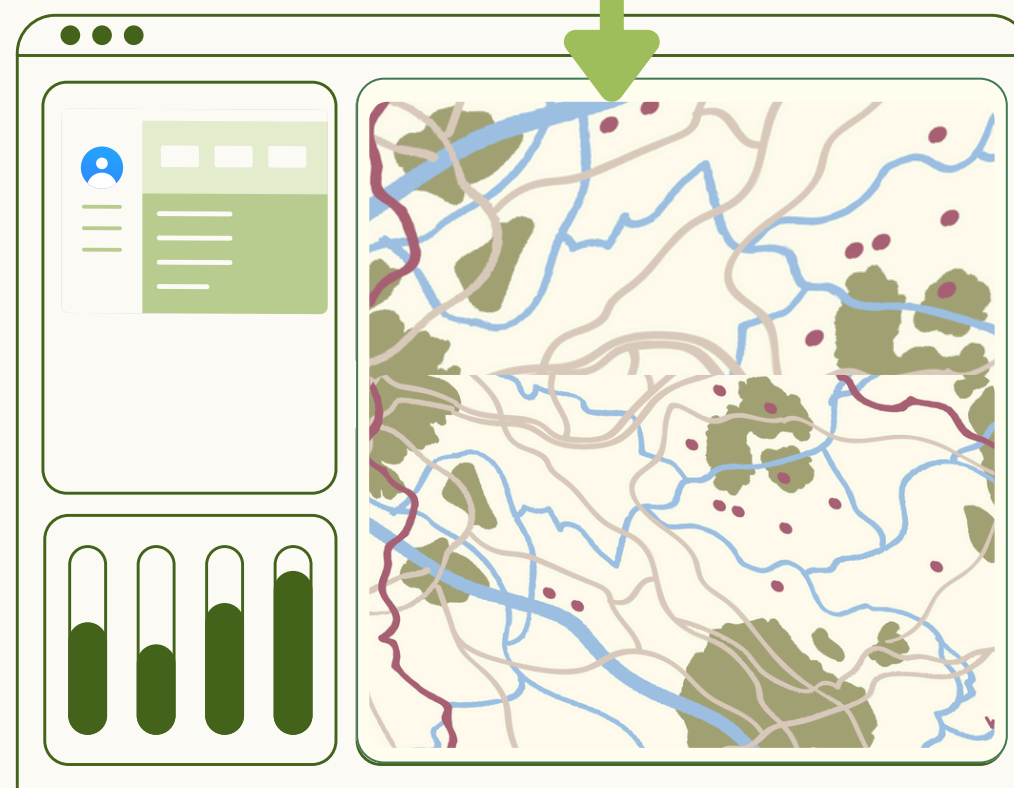
Enables herders to identify and access **registered farms** that have **approved grazing areas**.





-  Farmers can list **available grazeland**
-  specify terms and conditions, and manage access approval
-  ensures grazing occurs only on authorized lands.

Geo-fenced farmlands

All registered farmlands are digitized and **geofenced** to create a virtual geographic boundary.



-  Enhances visibility and management of farmlands across regions.
-  Includes an **alert system** that can notify users when unauthorized groups of persons or animals enter or exit a geo-fenced area, improving safety and monitoring.

Routes are based on traditional paths but optimized to avoid densely populated or conflict-prone areas.

Minimizes disruption to local communities.

Promotes safe livestock movement



Suggested Transhumance routes

Provides herders with recommended travel routes from the north to the south, especially during seasonal changes.

To bring this ambitious initiative to life, we are seeking impact-driven investors and partners who are committed to creating meaningful change locally. Your investment will help transform this vision into a scalable solution that fosters peaceful coexistence, economic resilience, and environmental sustainability.

